



2020

CATALOGUE
AUDIO

JETION INTERNATIONAL LIMITED

Catalog

■ TWS Bluetooth Earphone.....	01
■ Bluetooth Speaker	08
■ Bluetooth Headphone.....	22
■ Bluetooth Earphone.....	34
■ Type C Earphone.....	41

The background features a light blue gradient with several overlapping circles of varying shades of blue. A large, white, stylized number '1' is positioned on the left side of the central circle.

1 FIRST

**TWS Bluetooth
Earphone**

TWS Bluetooth Earphone with LED Battery Display



PJT-BEP297



Mode of Operation: Touch Control
Bluetooth Version: JL 5.0
Single Earbud Battery: 55mAh
Charging Station Battery: 300mAh
Charging Time: about 0.5H
Playing Time: 4-5H
Standby Time: 120H
Color: Black/white/pink
Features: with LED battery display; IPX5
grade living waterproofing; Magnetic
lid; smart voice assistant; DSP superior
sound; touch control
With color box



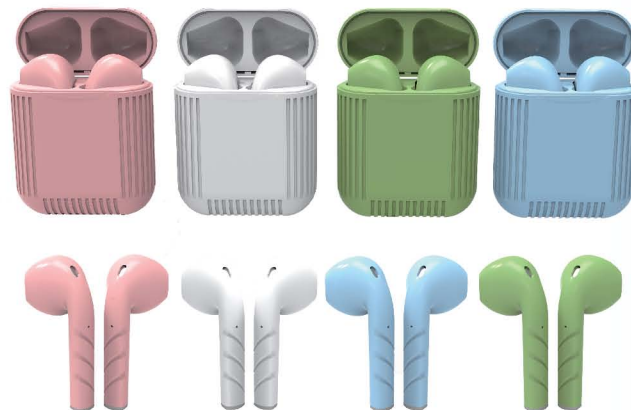


PJT-BEP298

Mode of Operation: Key Control
 Bluetooth Version: JL 5.0
 Single Earbud Battery: 40mAh
 Charging Station Battery: 500mAh
 Charging Time: 2H
 Playing Time: 2.5H
 Standby Time: 72H
 Product Size: earbud-30*25*11mm,
 station-60*37mm
 Color: Black/white/pink/green
 Can be used as a mirror makeup
 With color box

PJT-BEP287

Mode of Operation: Touch Control
 Bluetooth Version: 5.0
 Single Earbud Battery: 30mAh A+ grade
 Li-polmer
 Charging Station Battery: 300mAh Li-polymer
 Charging Time: 2-3H
 Playing Time: 3-4H
 Standby Time: 120H
 Color: Black/White/Blue/Green/Pink
 Function: auto-connection, binaural call,
 POP-UP
 With color box



PJT-BEP302

Mode of Operation: Key Control
Bluetooth Version: JL5.0+EDR
Single Earbud Battery: 40mAh
Charging Station Battery: 380mAh
Charging Time: 2H
WorkingTime: 2.5H
Standby Time: 72H
Product Size: earbud-25*15*13mm,
station-62*36*31mm
Color: Black/white/red/blue/purple
Ultra-small stealth fuselage, single ear,
binaural model
With gift box



PJT-BEP257

Mode of Operation: Key Control
Bluetooth Version: JL5.0
Material: ABS + PC
Single Earbud Battery: 40mAh
Charging Station Battery: 300mAh
Charging Time: 1.5H for earbuds,
2H for box
Playing Time: 2-3H
Color: Black/white
With color box



PJT-BEP301

Mode of Operation: Key Control
Bluetooth Version: 6936D 5.0+EDR
Single Earbud Battery: 40mAh
Charging Station Battery: 500mAh
Playing Time: 3H
Talking Time: 3H
Product Size: earbud-25*15*21mm,
station-64*26*39mm
Color: Black/red
With color box



PJT-BEP306

Mode of Operation: Key Control
Bluetooth Version: 5.0
Single Earbud Battery: 30mAh
Charging Station Battery: 80mAh
Charging Time: 2H
Playing Time: 2H
Standby Time: 60H
Color: Red/gray/blue
With color box

PJT-BEP305

Mode of Operation: Touch Control
Bluetooth Version: JL 5.0
Single Earbud Battery: 40mAh
Charging Station Battery: 380mAh
Charging Time :2H
Playing Time: 2.5H
Standby Time: 72H
Color: Black/pink/white/green
With color box



PJT-BEP221

Mode of Operation: Touch Control
Bluetooth Version: JL 6936/5.0
Single Earbud Battery: 50mAh
Charging Box Battery: 300mAh
Charging Time: 1.5H for box/earbuds
Playing Time: 3H
Talking Time: 4H
Standby Time: 48H
Earbud Size: 43.60*17*23.10mm
Charging Box Size: 54.64*54.1*30mm
Color: White
Ergonomic design for comfortable and stable wearing
With color box



PJT-BEP259

Mode of Operation: Touch Control
Bluetooth Version: JL 6936D/V5.0
Single Earbud Battery: 40mAh
Charging Station Battery: 1200mAh
Charging time: About 3H
Playing Time: 3.5H (medium volume)
Talking time: 4.5H
Standby time: 80H
Charging case dimension: 68.5*32.4*44.1 mm
Earbud dimensions: 22*15.5*13.8mm
With color box



PJT-BEP260

Mode of Operation: Touch Control
Bluetooth Version: 5.0
Single Earbud Battery: 40mAh
Charging Box Battery: 380mAh
Talking Time: 3H
Playing Time: 3H
Charging Time: 1H for earphones, 2H for box,
3 times to earbuds
Standby Time: 150H
Color: Black/white
With color box



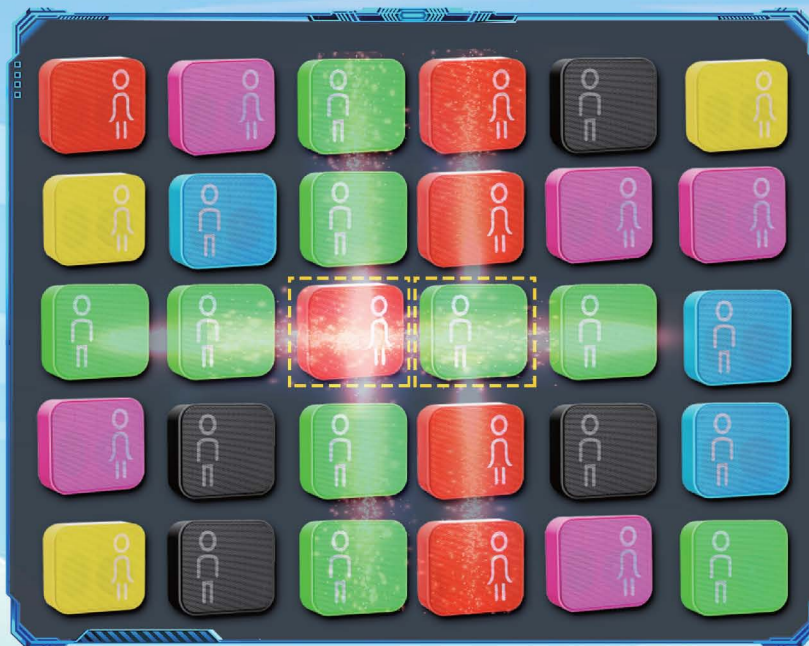
2 SECOND

Bluetooth
Speaker

BLUETOOTH SPEAKER



DIY Pattern



Mic / FM



U-disk / TF

98%



- Bluetooth Version: 3.0
- Size: 93*82*33mm
- Output Power: 5W
- Battery: 500mAh lithium battery
- Charging Time: 2-3H

- Playing Time: 3-5H
- Standby Time: 100-150H
- Color: Black/blue/pink/green/yellow/orange
- Support MIC/TF/U-disk/FM
- With color box

PJT-DSP630

IPX7 Waterproof
Bluetooth Version: JL5.0 + EDR
Output Power: 5W
Size: 93*33*75mm
Battery: 1200mAh
Charging Time: 2-3H
Playing Time: 6-7H
Standby Time: 100H
Support: BT/MIC/AUX/FM/TF/TWS/IPX
Color: Black/red/blue/green/printing
With color box



PJT-DSP631

IPX7 Waterproof
Bluetooth Version: JL5.0+ EDR
Output Power: 2*3W
Size: 145*66*61mm
Battery: 1200mAh
Charging Time: 2-3H
Playing Time: 6-7H
Standby Time: 100H
Support: BT/MIC/AUX/TF/TWS/IPX7
Color: Black/red/blue/printing
With color box



PJT-DSP463

Bluetooth Version: 4.2
Size: 85*80*50mm
Output Power: 3W*2
Battery: 1200mAh
Charging Time: 5H
Playing Time: 6-8H
Standby Time: 24H
Support: BT/MIC/AUX/FM/TF/UDISK/TWS
Color: Black/red/blue/printing
With color box



PJT-DSP472

Bluetooth Version: 5.0+EDR
Output Power: 4Ω 5W*2
Size: 446*70*74 mm
Battery: 1500mAh
Charging Time: 5H
Playing Time: 3-4H
Standby Time: 24H
Support: BT/MIC/AUX/FM/TF/UDISK/TWS
Color: Black/red/blue/printing
With color box



PJT-DSP610

IPX4 Waterproof
Bluetooth Version: JL5.0 + EDR
Output Power: 3W
Size: 81*59*59mm
Battery: 1100mAh
Charging Time: 3-4H
Playing Time: 4H
Standby Time: 100H
Support: BT/MIC/AUX/FM/TF/UDISK
Color: Black/red/blue/green/gray
With color box



PJT-DSP605

IPX7 Waterproof
Bluetooth Version: JL5.0 + EDR
Output Power: 5W
Size: 101*64*101mm
Battery: 600mAh
Charging Time: 1-2H
Playing Time: 2-3H
Standby Time: 100H
Support: BT/MIC/AUX/FM/TF/IPX7
Color: Black/gray/red/army green/blue
With color box



PJT-DSP659

IPX7 Waterproof
 Bluetooth Verion: JL5.0
 Output Power: 5W*1
 Size: 110*110*50mm
 Battery: 1200mAh
 Charging Time: 2H
 Playing Time: 8H (medium volume)
 Support: BT/MIC/AUX/FM/T-
 F/UDISK/TWS/IPX7
 Color: Black/gray/blue/camo green
 With color box



PJT-DSP699

IPX7 Waterproof
 Bluetooth Version: JL5.0
 Output Power: 5W*1
 Size: 87*87*89mm
 Battery: 1200mAh
 Charging Time: 3H
 Playing Time: 6-8H
 Standby Time: 100H
 Support: BT/MIC/AUX/FM/TF/IPX7
 Color: Black/red/green/printing
 With color box



PJT-DSP604

IPX7 Waterproof
 Bluetooth Version: JL5.0 + EDR
 Output Power: 5W*2
 Size: 205*64*89mm
 Battery: 2400mAh
 Charging Time: 4-5H
 Playing Time: 5-6 H
 Standby Time: 100H
 Support: BT/MIC/AUX/FM/TF/IPX7
 Color: Black/gray/red/army green/blue
 With color box



PJT-DSP680

IPX5 Waterproof
 Bluetooth Version: 5.0
 Output Power: 3W*2 (5W*2 optional)
 Size: 180*63*63mm
 Battery: 1800mAh
 Charging Time: 4H
 Working Time: 10H
 Standby Time: 200H
 Support BT/MIC/AUX/FM/TF/Torch/IPX5
 Color: Black/green/blue/red
 With color box

Bluetooth Speaker



PJT-DSP653

Bluetooth Verion: 5.0
Speaker Power: 3W*1
Material: ABS+Acrylic (10pcs)
Size: 75*75*170mm
Battery: 500mAh
Playing Time: 2-3H (70% volume)
With color box



Features:

1. The speaker has simple appearance, elegant and graceful. Black base and 10pcs of transparent acrylic.
2. The lamplight beats with the rhythm of the music through the acrylic board, showing the rainbow bright rhythm lights.

PJT-DSP688

Bluetooth Version: JL5.0
Output Power: 5W*1
Size: 121*45*140mm
Battery: 1200mAh
Charging Time: 3H
Playing Time: 3-6H
Standby Time: 180H
Support: BT/MIC/FM/TF/UDISK/TWS/7
colors light
Color: Black/red/gray/blue/green
With RGB lighting
With color box



PJT-DSP572

Bluetooth Verion: JL5.0
Output Power: 5W*2
Size: 210*64*65mm
Battery: 1800mAh
Charging Time: 3-4H
Playing Time: 5H
Standby Time: 100H
Support BT/MIC/AUX/FM/TF/UDISK
Color: Black/gray/blue/green/red
With color box



PJT-DSP555

Bluetooth Version: 5.0+EDR
Output Power: 3W*2
Size: 206*81*103mm
Battery: 1200mAh
Charging Time: 5H
Playing Time: 2.5-4.5H
Talking Time: 2.5-4.5H
Standby Time: 180H
Support: BT/MIC/AUX/FM/TF/UDISK/TWS
Color: Black/red/dark grey/dark blue/army green
With color box



PJT-DSP556

Bluetooth Version: 5.0+EDR
Output Power: 5W*2
Size: 255*100*133mm
Battery: 2000mAh
Charging Time: 6H
Playing Time: 2-5H
Talking Time: 2-5H
Standby Time: 180H
Support: BT/MIC/AUX/FM/TF/UDISK/TWS
Color: Black/red/dark grey/blue/army green
With color box



Bluetooth Speaker

PJT-DSP692



Bluetooth Version: JL5.0+EDR

Output Power: 6W

Size: 162*101*103mm

Battery: 1200mAh

Charging Time: 3H

Playing Time: 2-3H

Standby Time: 180H

Support: BT/MIC/FM/TF

Color: Wood grain color/Walnut

/Flame color/Skull/black red

With color box



PJT-DSP441

Bluetooth Version: 4.2+EDR
Output Power: 5W*2
Size: 202*131*119mm
Battery: 1200mAh
Charging Time: 3H
Playing Time: 2.5-3H
Standby Time: 24H
Support: BT/MIC/AUX/FM/TF/UDISK/TWS
Color: black/red/blue/green/orange/yellow
With color box



PJT-DSP439

Bluetooth Version: 4.2+EDR
Output Power: 5W*2
Size: 217*79*115mm
Battery: 1500mAh
Charging Time: 3H
Playing Time: 2.5-3H
Standby Time: 24H
Support: BT/MIC/AUX/FM/TF/UDISK
Color: black/red/blue/green
With color box



PJT-DSP507

Bluetooth Version: 4.2+EDR
Output Power: 3W*2
Size: 105*100*134mm
Battery: 1200mAh
Charging Time: 3-4H
Playing Time: 3H
Standby Time: 100H
Support: BT/MIC/AUX/FM/TF/UDISK//Re-
mote control
Color: Black
With color box



PJT-DSP506

Bluetooth Version: 4.2+EDR
Output Power: 3W*2
Size: 145*135*132mm
Battery: 2000mAh
Charging Time: 3-4H
Playing Time: 4-5H
Standby Time: 100H
Support: BT/MIC/AUX/FM/T-
F/UDISK//Remote control/LED display
Color: Black
With color box



PJT-DSP502

Bluetooth Version: JL 5.0
Output Power: 5W*2+2 passive radiators
Case: ABS+aluminium alloy
Size: 230*40*126mm
Battery: 2000mAh
Charging Time: 5H
Playing Time: 4H (max volume)
Standby Time: about 45H
Support: BT/MIC/AUX/FM/TF/UDISK/LED display
Color: Black/white
With color box



PJT-DSP70

10W sound bar design
Bluetooth Version: 5.0+EDR
Output Power: 5W*2
Size: 437*96*66mm
Battery: 1800mAh
Charging Time: 4H
Playing Time: 5-6H
Standby Time: 240H
Support: BT/MIC/AUX/FM/TF
/UDISK/TWS/LED display
Color: Black/silver/rose golden/gray
With color box





3 **THIRD**

**Bluetooth
Headphone**



PJT-BEP214

Features: Noise reduction isolation
 Bluetooth Version: JL5.0+EDR
 Battery Capacity: 200mAh
 Charging Time: 1.5H
 Talking Time: 4H
 Playing Time: 5H
 Standby Time: 300H
 Support: BT/MIC/AUX/ANC
 Color: Black/White/Red/Gold with rubber coating
 With color box

PJT-BEP313

Features: Active noise canceling headphones
 Bluetooth Version: JL5.0
 Battery Capacity: 600mAh
 Charging Time: 2.5H
 Talking Time: 25h
 Playing Time: 25h
 Standby Time: 80H
 Support: BT/MIC/AUX/ANC
 Color: Black, with rubber coating
 With color box





PJT-BEP314

Features: Active noise canceling headphones
 Bluetooth Version: JL5.0
 Battery Capacity: 600mAh
 Charging Time: 2.5H
 Talking Time: 25h
 Playing Time: 25h
 Standby Time: 80H
 Support: BT/MIC/AUX/ANC
 Color: Black, with rubber coating
 With color box

PJT-DEP908-L

Features: Noise reduction isolation
 Bluetooth Version: JL5.0+EDR
 Battery Capacity: 200mA
 Charging Time: 2H
 Playing Time: 4H
 Standby Time: 300H
 Support: BT/MIC/AUX/ANC
 Color: Black/white/gold/silver
 With color box

Standard BT version with lighting: PJT-DEP908-L



PJT-BEP291

Bluetooth Version: JL5.0
Battery Capacity: 1000mAh
Charging Time: 3.5-4H
Talking Time: 28H
Playing Time: 28H
Standby Time: 300H
Support: BT/MIC/AUX/TF
Color: Black with OEM design printing
With color box



PJT-BEP943

Bluetooth Version: 4.2, CSR8635
Battery Capacity: 1000MAH
Charging Time: 3-4H
Talking Time: 54H
Standby Time: 300H
Playing Time: Bluetooth only - 54H;
Bluetooth+light+vibration - 9H;
Bluetooth+vibration - 27H;
Bluetooth+light - 12H
Support: BT/MIC/AUX
With cool breathing light and vibration
With ANC microphone, dual mic design
Protein leather for long time wearing
Color: Black/rose pink/black red/white, metal case
With color box



PJT-DEP941

Bluetooth Version: JL5.0
Battery Capacity: 300mAh
Charging Time: 2H
Playing Time: 17H
Standby Time: 300H
Support: BT/MIC/AUX/TF
With 7 colors breathing light
Color: Black/white/black+red/white+rose
With color box



PJT-BEP294

Bluetooth Version: JL5.0
Battery Capacity: 250mAh
Charging Time: 1.5-2H
Playing Time: 28H (max)
Standby Time: 300H
Support: BT/MIC/AUX
Color: Pink/blue/pink+green
Small design special for kids using
With color box



PJT-BEP289

Bluetooth Version: JL5.0
Battery Capacity: 500mAh
Charging Time: 1.5-2H
Playing Time: 7.5H (BT+light), 11H (BT)
Talking Time: 7.5H (BT+light), 11H (BT)
Standby Time: 300H
Support: BT/MIC/AUX/TF
With 7 colors breathing light
Color: White gold/gray gold/black/orange/pink/green
With color box



PJT-DEP940

Bluetooth Version: JL5.0
Battery Capacity: 1000mAh
Charging Time: 3-3.5H
Talking Time: 12H
Playing Time: full charger 38.5H (BT), 20H (BT+light), charging 10 mins can support 6.5H (BT), 3H (BT+light)
Standby Time: 300H
Support: BT/MIC/AUX/TF
With cool breathing light
EQ dual sound mode switch
Foldable and rotatable design
Color: Black/pink/white+black/blue
With color box



PJT-BEP251

Bluetooth Version: 4.2+EDR
 Battery Capacity: 200mAh
 Charging Time: 2H
 Playing Time: 5H
 Standby Time: 300H
 Support: BT/TF/FM
 Color: Black/white/red/blue/grey/orange
 /rose red/dark green/lemon yellow
 With color box

PJT-BEP216

Bluetooth Version: JL5.0+EDR
 Battery Capacity: 200mAh
 Charging Time: 1.5H
 Talking Time: 4H
 Playing Time: 5H
 Standby Time: 300H
 Support: BT/MIC/AUX/TF/FM
 Color: Black/White/Red/Rose gold,
 with rubber coating
 With color box





PJT-BEP274

Bluetooth Version: JL5.0+EDR
 Battery Capacity: 200mAh
 Charging Time: 1.5H
 Talking Time: 4H
 Playing Time: 5H
 Standby Time: 300H
 Support: BT/MIC/AUX/TF/FM
 Color: Black+gold/white+gold/red/blue/gray
 With color box

PJT-BEP286

Bluetooth Version: 5.0
 Battery Capacity: 300mAh
 Charging time: 1.5H
 Standing time: 12.5H
 Playing time: 10H
 Talking time: 10H
 Support: BT/MIC/AUX/TF
 Color: Black (golden/silver decoration ring)
 With color box



PJT-BEP173

Bluetooth Version: 5.0
 Battery Capacity: 300mAh
 Charging Time: 1.5H
 Playing Time: 7H
 Talking Time: 7H
 Standing Time: 12.5H
 Support: BT/MIC/AUX/TF
 Color: Black/red/blue
 With color box



PJT-BEP285

Bluetooth Version: JL 5.0
 Battery Capacity: 300mAh
 Charging Time: 1.5H
 Talking Time: 10H
 Playing Time: 10H
 Standby Time: 12.5H
 Support: BT/MIC/AUX
 Color: Black/blue/red/orange,
 with rubber coating
 With window color box



PJT-BEP215

Bluetooth Version: JL5.0+EDR
 Battery Capacity: 200mAh
 Charging Time: 1.5H
 Talking Time: 4H
 Playing Time: 5H
 Standby Time: 300H
 Support: BT/MIC/AUX/TF/FM
 Color: Black/White/Red/Gold,
 with rubber coating
 With color box

PJT-BEP255

Bluetooth Version: JL5.0
 Battery Capacity: 300mAh
 Charging Time: 1.5H
 Talking Time: 10H
 Standing Time: 12.5 H
 Playing Time: 10H
 Support: BT/MIC/AUX
 Color: Black/red/purple,
 with rubber coating
 With color box





PJT-BEP315

Bluetooth Verison: 5.0
 Battery Capacity: 300mAh
 Talking Time: 10H
 Charging Tme: 1.5H
 Standing Time: 300H
 Playing Time: 10H
 Support: BT/MIC/AUX
 Color: Golden/silver/purple,
 metal case
 With color box

PJT-BEP250

Bluetooth Version: JL4.2+EDR
 Battery Capacity: 200mAh
 Charging Time: 2H
 Talking Time: 4H
 Playing Time: 5H
 Standby Time: 300H
 Support: BT/MIC/TF/FM
 Color: Black/red/blue,
 with rubber coating
 With color box





PJT-BEP238

Bluetooth Version: JL5.0
 Battery Capacity: 350mAh
 Charging Time: 3H
 Talking Time: 15H
 Playing Time: 15H
 Standby Time: 400H
 Support: BT/MIC/AUX
 Color: Red/gun metal black/
 champagne/blue, metal case
 With color box

PJT-BEP253

Bluetooth Version: 4.2+EDR , CSR8635
 Battery Capacity: 300mAh
 Charging Time: 1H
 Talking Time: 20H
 Playing Time: 7-10H
 Standby Time: 300H
 Support: BT/MIC/AUX
 Color: Black/White/Brown/Army green,
 metal case
 With color box





4 FORTH

Bluetooth
Earphone

PJT-BEP208

Bluetooth Version: BK5.0
 Case: Metal
 Battery Capacity: 100mAh
 Charging Time: 2H
 Playing Time: 6H
 Standby Time: 180H
 Support: BT/MIC
 Color: Black/red
 In-Ear Design, More Wearable, More Sporty
 IOS Battery display / Ultra High Capacity
 Battery / Ultra Low Power Consumption
 With window color Box



PJT-BEP234

Bluetooth Version: BK5.0
 Case: Aluminum+Silicone+ABS
 Battery: 240mAh lithium battery
 Charging Time: about 4H
 Playing Time: about 22H
 Talking Time: about 2H
 Standby Time: about 96H
 Support: BT/MIC/Magnetic
 Color: Dark gray/light gray/red
 With color box



PJT-BEP209

Bluetooth Version: JL5.0
 Case: Metal
 Battery Capacity: 240mAh, Dual electromagnetic
 Charging Time: 2H
 Playing Time: 13H
 Standby Time: 180H
 Support: BT/MIC/Magnetic
 In-Ear Design, More Wearable, More Sporty
 IOS Battery display / Ultra High Capacity Battery
 / Ultra Low Power Consumption
 With window color Box

PJT-BEP210

Bluetooth Version: JL5.0
 Case: Metal
 Battery Capacity: 240mAh, Dual electromagnetic
 Charging Time: 2H
 Playing Time: 13H
 Standby Time: 180H
 Support: BT/MIC/Magnetic
 Color: Black/gold
 In-Ear Design, More Wearable, More Sporty
 IOS Battery display / Ultra High Capacity
 Battery / Ultra Low Power Consumption
 With window color Box



ANC Bluetooth Earphone

PJT-BEP239

Bluetooth Version: BES2000IS/V5.0
Battery: 180mAh
Charge time: 3H
Music play time: 8H(Bluetooth+ANC);
12H(Bluetooth only)
ANC depth: Up to 27dB
Support: BT/MIC/Magnetic/ANC
Color: Black/red/gold/rose gold
With color box

Feature:

- Active noise canceling: Active noise cancellation technology free yourself from external noise by flipping the switch when you needed
- Super bass sound: 12 mm drivers deliver professionally-tuned sound with a rich, immersive sound signature, superior clarity, and Hi-Res audio compatibility.
- Integrated Magnet: Earbuds attach together for a secure, yet sporty way to carry around your neck
- IPX6 Sweatproof: Sweatproof design keeps liquids out and the internal components protected.
 - Medical grade silicone neckband, comfortable to wear, suitable for sports.



PJT-BEP303

Bluetooth Version: Bluetooth 5.0

Case: Metal

Battery: 90mAh

Charging Time: 2H

Playing Time: 6H

Standby Time: 200H

Support: BT/MIC/Magnetic

Color: Black/red

Magnet design make it never falling out

High-value appearance and diamond

cutting process

With color box



PJT-BEP156

Bluetooth Version: 4.2

Case: Metal

Battery: 55mAh lithium battery

Charging Time: 1.5-2H

Playing Time: 2H

Standby Time: 168H

Support: BT/MIC

Color: Black/white

With window color box

PJT-BEP159

Bluetooth Version: JL4.2
Case: Aluminum+TPE+ABS
Battery: 85mAh lithium battery
Charging Time: 2H
Playing Time: 4-4.5H
Standby Time: 168H
Support: BT/MIC, and Magnetic/TF optional
Color: Black/silver/gold/red
With window color box



PJT-BEP157

Bluetooth Version: 4.2
Case: Metal
Battery: 55mAh lithium battery
Charging Time: 1.5-2H
Playing Time: 2H
Standby Time: 168H
Support: BT/MIC/Magnetic, and TF optional
Color: Black/white/green
With window color box

PJT-BEP101

Bluetooth Version: BK4.2
Case: Aluminum+TPE+ABS
Battery: 85mAh lithium battery
Charging Time: 2H
Playing Time: 3.5-6H
Standby Time: 150H
Support: BT/MIC/TF
Color: Black/silver/gold/rose gold
With color box



PJT-BEP103

Bluetooth Version: BK4.2
Case: Aluminum+TPE+ABS
Battery: 85mAh lithium battery
Charging Time: 2H
Playing Time: 3.5-6H
Standby Time: 150H
Support: BT/MIC, and TF optional
Color: Black/silver/gold/rose gold
With color box

Type C Earphone

PERFECT CLEAR SOUND QUALITY
HIGH QUALITY HAND-MADE MATERIAL
IN-LINE MIC & REMOTE CONTROL BUTTON



01



02



03



04



05



06



07



08



09

Connectors: Type-C
Impedance: 32Ω
Sensitivity: $108\pm 3\text{dB}$ at 1KHz, 6mW
Frequency Respond: 10Hz~23KHz

Rated Input Power: 5mW
Maximum Input Power: 10mW
Cord Material: TPE
Length: 120cm

Compatibility: Type-C mobile phone
Function: with microphone
With window color box



Address: 3rd Floor, Building D, Yushu industrial park, Yushu
south road, Science City, Huangpu district, Guangzhou
TEL: +86-20-38288266, 38288283
Email: sales@jetion.com
[http: www.pc210.com](http://www.pc210.com); www.jetion.com

